

Spreader bar and Sling Testing

Case Study

Profilage Ltd

Spreader Bar and Sling Testing

Time Frame: 2023

Scope:

As part of their requirement to OSHA 2005, Profilage Ltd requested ETMS perform tests on their spreader bar and slings.

The tests carried out on the spreader bar were as follow:

- Visual Inspection
- Load bearing test
- Die Penetration test
- Thickness measurement

The tests carried out on the slings were as follow:

- Visual Inspection
- Load bearing test

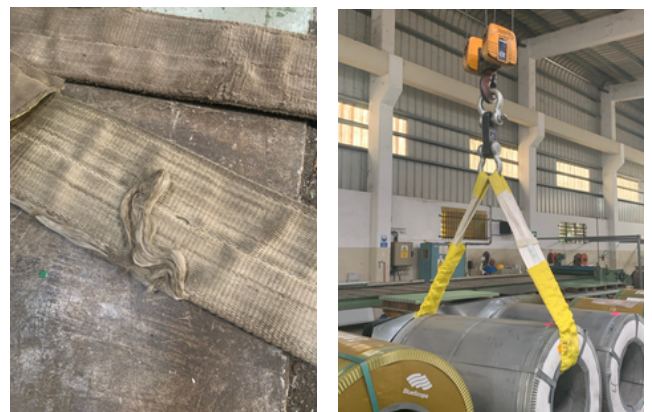
Methodology

As the spreader bars were made locally, the load test was carried out at 1.2x working load. Although the design load for the slings were known, the test was carried out at 1.2x working load

Pictures from Spreader Bar testing



Picture from Sling testing



Pictures from Dye Penetration test



Outcome

All spreader bars tested were found to be suitable for usage. A few slings were replaced by new ones immediately and certificates were issued.